



**Package Contents**

- Wireless-G Ethernet Bridge with 5-Port Switch
- Setup CD-ROM
- User's Guide on CD
- Quick Installation Guide
- Detachable Antenna
- RJ-45 Network Cable
- Power Adapter
- Registration Card

**2.4GHz**  
**802.11g**  
**Wireless-G**  
**Ethernet Bridge**  
**with 5-Port Switch**

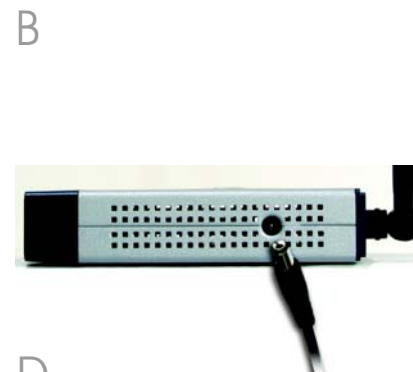
Quick Installation

Wireless



# 1 Connect the Wireless-G Ethernet Bridge for Setup

- A** Attach the detachable antenna.
- B** Plug the included Ethernet network cable into one of the LAN ports on the back panel of the Bridge.
- C** Plug the other end of the Ethernet network cable into the RJ-45 port of a hub, switch, or router on your wired network.
- D** Plug the supplied power adapter into the Power port on the side panel of the Bridge. Then plug the other end into an electrical outlet.



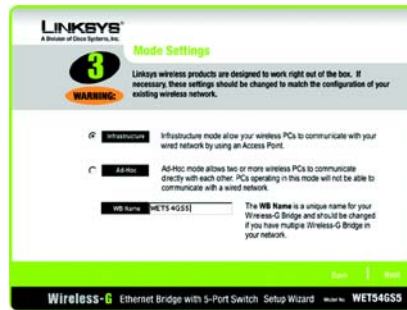
# 2 Set up the Wireless-G Ethernet Bridge

- A** Insert the Setup CD-ROM into your PC's CD-ROM drive. The Setup Utility should run automatically, and the *Welcome* screen should appear. If it does not appear, click the **Start** button and choose **Run**. In the field that appears, enter **D:\setup.exe** (if "D" is the letter of your CD-ROM drive).
- B** Click **Setup** to begin the setup process.
- C** Make sure the Bridge is correctly connected to your wired network. Click **Next**.
- D** The screen displays a list of Wireless-G Ethernet Bridges on your network, along with their status information. Select the Bridge you are currently installing by clicking its name in the *Selection* box. Click **Yes**.
- E** A *Password* screen will appear. In lowercase letters, enter **admin** in the *Password* field. Then click **Enter**.



**E**

**F** The *Mode Settings* screen will appear. Select **Infrastructure** if you want your wireless computers to communicate with computers on your wired network using a wireless access point. Select **Ad-Hoc** if you want wireless computers to communicate directly with each other.



In the *WB Name* field, enter a unique name for the Bridge. Click **Next**.

**G** On the *Wireless Settings* screen, enter your wireless network's SSID. If you chose Ad-Hoc mode, select the channel that your network uses.



If you have Wireless-G (802.11g) and Wireless-B (802.11b) devices in your network, then keep the default *Network Mode* setting, **Mixed**. If you have only Wireless-G devices, select **G-Only**. Then click **Next**.

**H** The *IP Settings* screen will appear. If your network has a DHCP server, select **Automatically obtain an IP address (DHCP)**. Click **Next** and proceed to step I.



If your network does not have a DHCP server, select **Set IP configuration manually**. Enter

an IP Address, IP Mask (also known as Subnet Mask), and Gateway. You must specify an IP address. If you are unsure about the IP Mask and Gateway, leave the default settings. Click **Next** and proceed to step I.

**I** The *Security Settings* screen will appear. Choose from WEP or WPA PSK. If your network has WEP encryption enabled, then select the level of WEP encryption, and enter a Passphrase. The WEP key will be automatically generated. If you want to manually enter the WEP key, leave the *Passphrase* field blank and enter the WEP key in the *Key 1* field. If your network has WEP encryption disabled, keep the default, **Disabled**. Then click **Next**.

If your network has WPA PSK enabled, then select WPA PSK from the drop-down menu. Select TKIP for the algorithm, then enter a Pre-Shared Key of 8-32 characters. Click **Next**.

**J** Review your settings on the *Confirmation* screen. Write down the Bridge's IP Address if you want to access the Bridge's Web-based Utility. Click **Yes** to save these settings.

**K** On the *Congratulations* screen, click **Exit**.

**NOTE:** The default IP address of the Bridge is **192.168.1.226**.

**NOTE:** For more security information, refer to "Appendix B: Wireless Security." in the User Guide on the CD-ROM.



**A** After configuration, unplug the power adapter from the electrical outlet, and unplug the Ethernet network cable from the hub, switch, or router.

**B** Plug the Ethernet network cable into the RJ-45 port on the Ethernet-ready network device you wish to add to the wireless network.

**C** Plug the power adapter into a local electrical outlet.

**Congratulations! The installation of the Wireless-G Ethernet Bridge is complete.**

**NOTE:** If you would like to change these basic settings or make advanced configuration changes, use your web browser and the Wireless-G Ethernet Bridge Web-based Utility.

Open your web browser, and enter the IP address of the Wireless-G Ethernet Bridge (the default IP address is **192.168.1.226**). Refer to the User Guide on the Setup CD-ROM.

**LINKSYS**  
A Division of Cisco Systems, Inc.

For additional information or troubleshooting help, refer to the User Guide on the Setup CD-ROM. You can also call or e-mail for further support.

**24-hour Technical Support**  
800-326-7114  
(toll-free from US or Canada)

**E-mail Support**  
support@linksys.com

**Website**  
<http://www.linksys.com> or  
<http://support.linksys.com>

**RMA (Return Merchandise Authorization)**  
<http://www.linksys.com/support>

**FTP Site**  
<ftp://ftp.linksys.com>

**Sales Information**  
800-546-5797 (800-LINKSYS)

Linksys is a registered trademark or trademark of Cisco Systems, Inc. and/or its affiliates in the U.S. and certain other countries. Copyright © 2004 Cisco Systems, Inc. All rights reserved.