



**Package Contents**

- Wireless-G Ethernet Bridge
- Setup CD-ROM
- User's Guide on CD
- Quick Installation Guide
- Detachable Antenna
- RJ-45 Network Cable
- One Pair of Bridge Stands
- Power Adapter
- Registration Card

**2.4GHz**  
802.11g  
**Wireless-G**  
**Ethernet Bridge**

Wireless

Quick Installation



# 1 Connect the Wireless-G Ethernet Bridge for Setup

- A** Attach the detachable antenna.
- B** Plug the included Ethernet network cable into the LAN port on the back panel of the Bridge.
- C** Plug the other end of the Ethernet network cable into the RJ-45 port of the hub, switch, or PC you wish to use to configure the Bridge.
- D** Plug the supplied power adapter into the Power port on the back panel of the Bridge. Then plug the other end into an electrical outlet.



B



D

# 2 Set up the Wireless-G Ethernet Bridge

- A** Insert the Setup CD-ROM into your PC's CD-ROM drive. The Setup Utility should run automatically, and the *Welcome* screen should appear. If it does not appear, click the **Start** button and choose **Run**. In the field that appears, enter **D:\setup.exe** (if "D" is the letter of your CD-ROM drive).
- B** Click **Setup** to begin the setup process.
- C** Make sure the Bridge is correctly connected to your wired network. Click **Next**.
- D** The screen displays a list of Wireless-G Ethernet Bridges on your network, along with their status information. Select the Bridge you are currently installing by clicking its name in the *Selection* box. Click **Yes**.
- E** A *Password* screen will appear. In lowercase letters, enter **admin** in the *Password* field. Then click **Enter**.



A



C

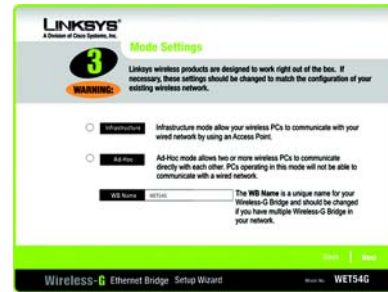


D



E

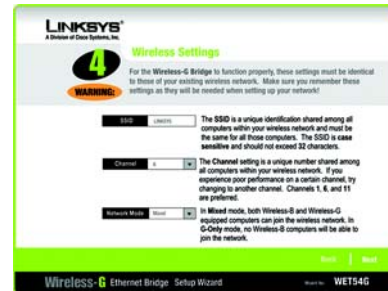
**F** The *Mode Settings* screen will appear. Select **Infrastructure** if you want your wireless computers to communicate with computers on your wired network using a wireless access point. Select **Ad-Hoc** if you want wireless computers to communicate directly with each other.



**F**

In the *WB Name* field, enter a unique name for the Bridge. Click **Next**.

**G** On the *Wireless Settings* screen, enter your wireless network's SSID. If you chose Ad-Hoc mode, select the channel that your network uses.



**G**

If you have Wireless-G (802.11g) and Wireless-B (802.11b) devices in your network, then keep the default *Network Mode* setting, **Mixed**. If you have only Wireless-G devices, select **G-Only**. Then click **Next**.

**H** The *IP Settings* screen will appear. If your network has a DHCP server, select **Automatically obtain an IP address (DHCP)**. Click **Next** and proceed to step I.



**H**

If your network does not have a DHCP server, select **Set IP**

**configuration manually**. Enter an IP Address, IP Mask (also known as Subnet Mask), and Gateway. You must specify an IP address. If you are unsure about the IP Mask and Gateway, leave the default settings. Click **Next** and proceed to step I.

**NOTE:** The default IP address of the Bridge is **192.168.1.226**.

**NOTE:** For more security information, refer to "Appendix B: Wireless Security," in the User Guide on the CD-ROM.

**I** The *Security Settings* screen will appear. Choose from WEP or WPA PSK. If your network has WEP encryption enabled, then select the level of WEP encryption, and enter a Passphrase. The WEP key will be automatically generated. If you want to manually enter the WEP key, leave the *Passphrase* field blank and enter the WEP key in the *Key 1* field. If your network has WEP encryption disabled, keep the default, **Disabled**. Then click **Next**.



**I**

If your network has WPA PSK enabled, then select WPA PSK from the drop-down menu. Select TKIP for the algorithm, then enter a Pre-Shared Key of 8-32 characters. Click **Next**.



**I**

**J** Review your settings on the *Confirmation* screen. Write down the Bridge's IP Address if you want to access the Bridge's Web-based Utility. Click **Yes** to save these settings.



**J**

**K** On the *Congratulations* screen, click **Exit**.

**A** After configuration, unplug the power adapter from the electrical outlet, and unplug the Ethernet network cable from the PC.

**B** Plug the Ethernet network cable into the RJ-45 port on the Ethernet-ready network device you wish to add to the wireless network.

**C** Plug the power adapter into a local electrical outlet.

**Congratulations! The installation of the Wireless-G Ethernet Bridge is complete.**

**NOTE:** The Bridge features Power over Ethernet (PoE) support. PoE technology allows a PoE adapter (also known as a power injector, power hub, or inline power device) to supply data and power to an Ethernet device using a single Ethernet network cable. To use the Bridge's PoE feature, follow the instructions for your specific PoE device.

**LINKSYS**  
A Division of Cisco Systems, Inc.

For additional information or troubleshooting help, refer to the User Guide on the Setup CD-ROM. You can also call or e-mail for further support.

**24-hour Technical Support**  
800-326-7114  
(toll-free from US or Canada)

**E-mail Support**  
support@linksys.com

**Website**  
http://www.linksys.com or  
http://support.linksys.com

**RMA (Return Merchandise Authorization)**  
http://www.linksys.com/support

**FTP Site**  
ftp://ftp.linksys.com

**Sales Information**  
800-546-5797 (800-LINKSYS)

Linksys is a registered trademark or trademark of Cisco Systems, Inc. and/or its affiliates in the U.S. and certain other countries. Copyright © 2004 Cisco Systems, Inc. All rights reserved.