



Quick Installation

This Quick Installation is meant to help you install the WET11 quickly and easily. For detailed instructions on installation and configuration and further setup options, please consult the User Guide.

Instant Wireless™ Ethernet Workgroup Bridge



WET11

Included with the Linksys WET11 Wireless Ethernet Bridge

- Linksys Wireless Ethernet Bridge (1)
- One External Antenna (attached)
- One Power Adapter (2)
- One RJ45 CAT 5 UTP Cable (3)
- One Setup CD-ROM with User Guide (4)
- Quick Installation and Registration Card (not shown)



Installation Process

For more detailed instructions, please refer to the Wireless Ethernet Bridge User Guide.

1 Connect the Wireless Ethernet Bridge

A. Plug a crossover or straight-through cable into the RJ-45 jack on the back panel of the Bridge.



B. The X-ll selection switch offers a choice between two settings. Use the X setting if you are connecting the Bridge to a network card or other Ethernet device. Use the ll setting if you are connecting the Bridge to a hub or switch.



C. Plug the other end of the crossover or straight-through cable into the RJ-45 jack on the PC you wish to use to configure the Bridge.

D. Plug the supplied power adapter into the jack on the back panel of the Bridge. Then plug the other end into an electrical outlet.



E. Proceed to the next section, "Set Up the Wireless Ethernet Bridge."

F. After configuration, unplug the crossover or straight-through cable from the PC, and plug it into the RJ-45 jack on the Ethernet-ready network device you wish to add to the WLAN.

2 Set Up the Wireless Ethernet Bridge

The Setup Wizard will guide you through all the steps necessary to set up the Wireless Ethernet Bridge.

A. Insert the **Setup Wizard CD-ROM** into your CD-ROM drive. The Setup Wizard should run automatically, and the Welcome screen should appear. If it does not, click the **Start** button and choose **Run**. In the box that appears, enter **D:\setup.exe** (where "D" is the letter of your CD-ROM drive).

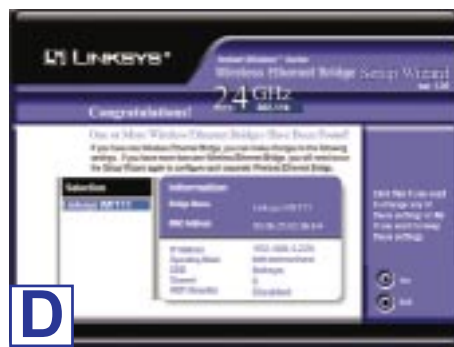
B. To set up your Wireless Ethernet Bridge, click the **Setup** button.



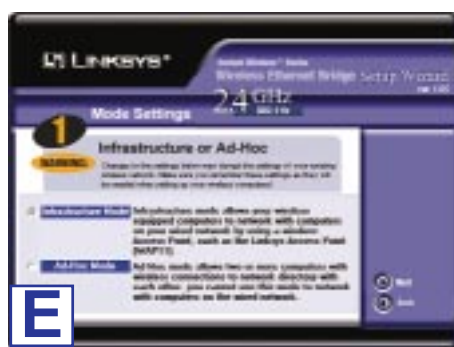
C. This screen shows the two ways to configure the Bridge using this Setup Wizard. Click the **Next** button.



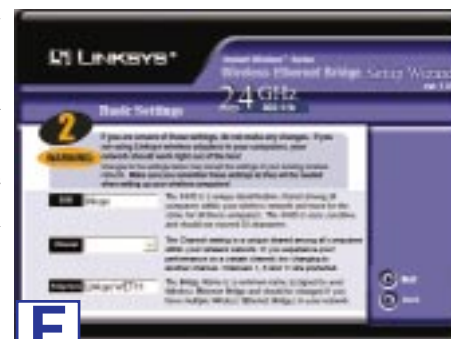
D. Now displayed is a list of Wireless Ethernet Bridges on your network. If you have only one Bridge on your network, it will be the only one displayed. If you have multiple Bridges on your network, select the **Bridge** you are currently installing by clicking its name in the Selection box. Click the **Yes** button.



E. This screen shows a choice of two wireless modes. Click the **Infrastructure Mode** radio button if you want your wireless computers to network with computers on your wired network using a wireless access point. Click the **Ad-Hoc Mode** radio button if you want multiple wireless computers to network directly with each other. Then click the **Next** button.



F. The Basic Settings screen will now appear. Enter your wireless network's **SSID**, and select the **Channel** at which the network broadcasts its wireless signal. Enter a unique **Bridge Name** for the Bridge. Then click the **Next** button.

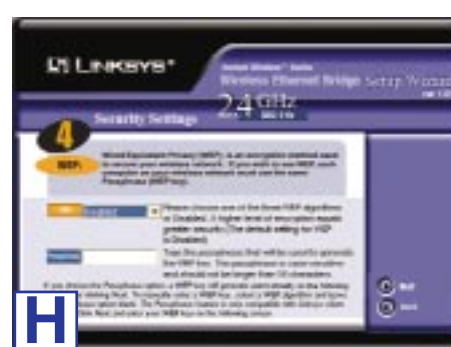


G. The IP Settings screen will now appear. If your network has a DHCP server, click the radio button next to **Automatically obtain an IP address (DHCP)**. Then click the **Next** button and proceed to step H.



If your network does not have an DHCP server, click the radio button beside **Set IP configuration manually**. Enter an **IP Address**, **IP Mask**, and **Gateway** appropriate to your network. You must specify an IP address. If you are unsure about the IP Mask and Gateway, it is better to leave these two fields alone. Then click the **Next** button and proceed to step H.

H. The Security Setting screen will appear. Set the Wired Equivalent Privacy (WEP) encryption for your wired network. Select a WEP configuration method: **Disabled** (no WEP encryption), **64-bit WEP**, or **128-bit WEP**. Then select a **passphrase**, the code used when logging a wireless device onto the wireless network. The passphrase is case-sensitive and should not be longer than 16 alphanumeric characters.



I. Review your settings. If these settings are correct, click the **Yes** button to save these settings. If any of these settings are wrong, click the **Back** button to make changes.



J. The configuration using the Setup Wizard is complete. To configure any other Bridges on your network, you can run this Setup Wizard again. Click the **Exit** button to exit the Setup Wizard.



K. After configuration, unplug the crossover or straight-through cable from the PC, and plug it into the RJ-45 jack on the Ethernet-ready network device you wish to add to the WLAN.

Your installation is complete. For advanced configuration, setup information, or any other questions, refer to your product's User Guide.