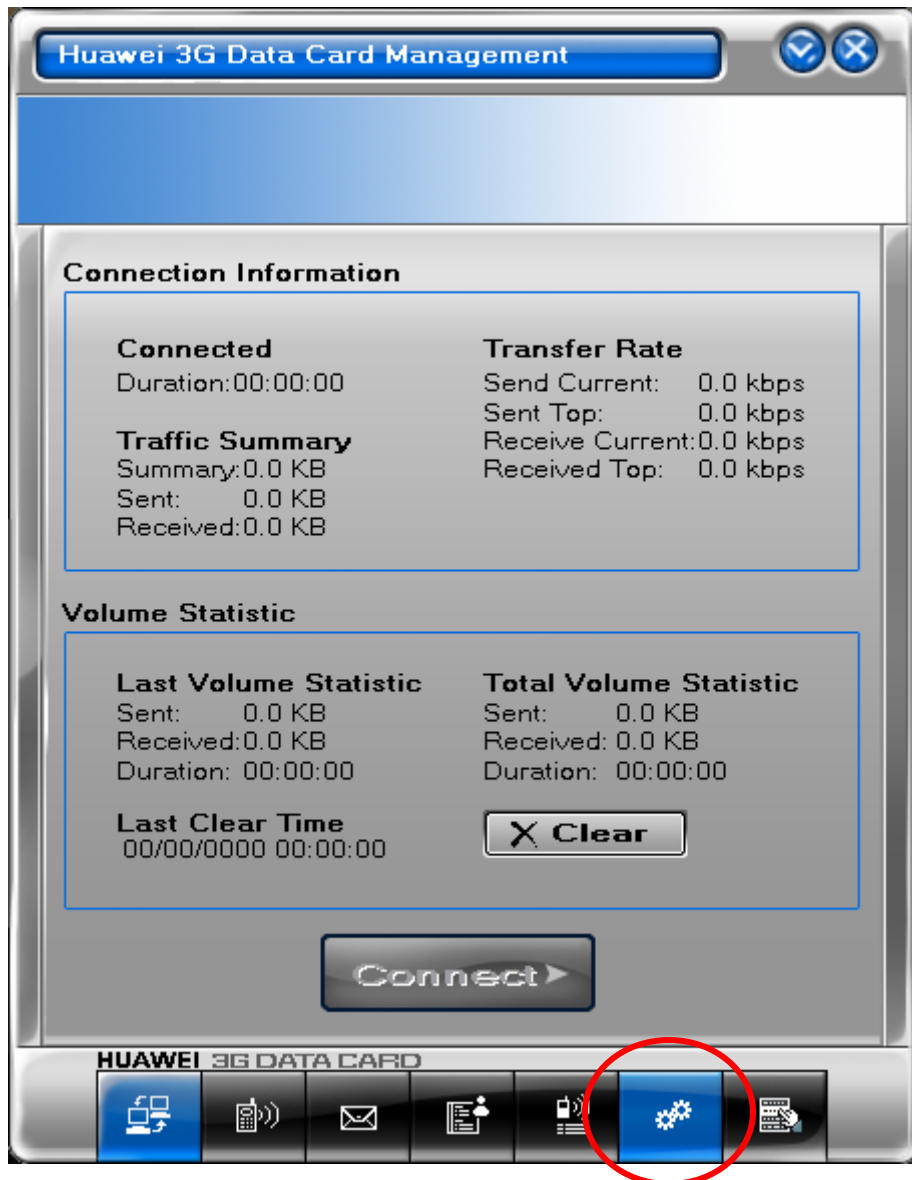
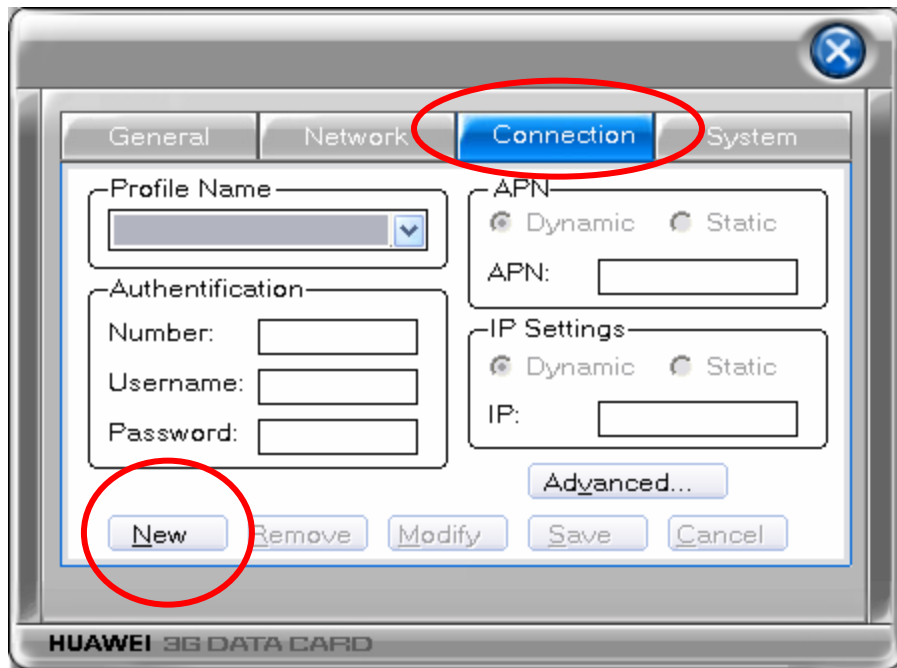


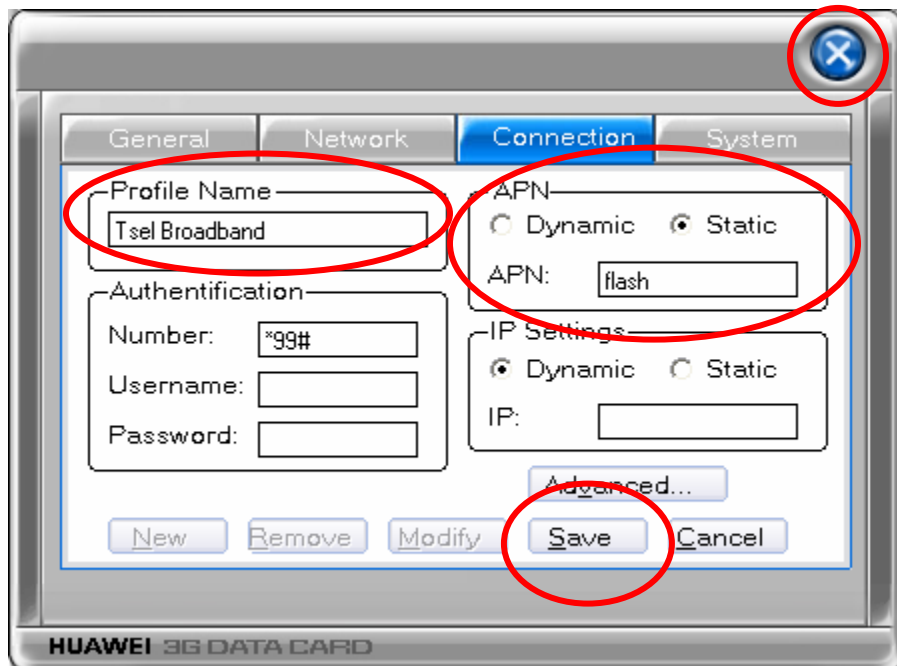
1. Please make sure you have registered your Telkomsel SIMCard by sending SMS with Keyword : Flash to 3636. If you haven't, please do so and wait until you receive reply SMS from 3636 as a sign that registration is successful.
2. Double click the Huawei 3G Datacard icon on your desktop OR Click Start > All Programs > Huawei 3G Datacard Management > Huawei 3G Datacard (this step can only be done after you have successfully installed the Huawei E620 driver)
3. IF you are asked to enter your PIN, please enter you Telkomsel SIMCard PIN correctly (this is the same number that is asked whenever you turn on your handset)
4. Click Settings



5. Click Connection and then Click New



6. Please fill in the box according to the below picture, Click Save afterwards and close the dialog box (click X mark)



7. Click Connect. If you follow the step 1 to 6 correctly, you will be able to successfully connect to Telkomsel network with TELKOMSELFlash settings

