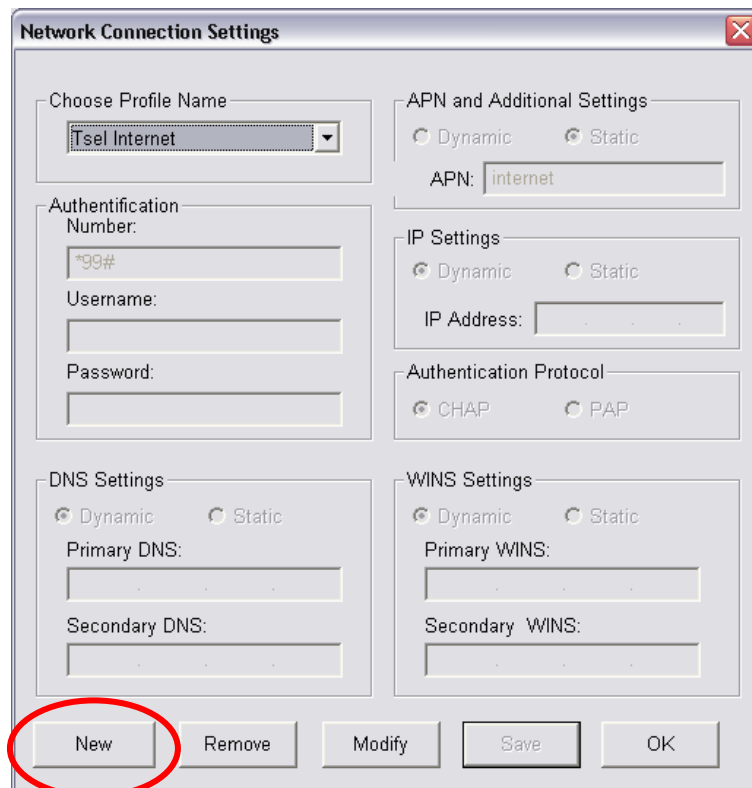


1. Please make sure you have registered your Telkomsel SIMCard by sending SMS with Keyword : Flash to 3636. If you haven't, please do so and wait until you receive reply SMS from 3636 as a sign that registration is successful.
2. Double click the Mobile Connect icon on your desktop OR Click Start > All Programs > Mobile Connect > Mobile Connect (this step can only be done after you have successfully installed the Huawei USB Modem driver)
3. IF you are asked to enter your PIN, please enter you Telkomsel SIMCard PIN correctly (this is the same number that is asked whenever you turn on your handset)
4. Click Settings and then Network Connection Settings



5. Click New

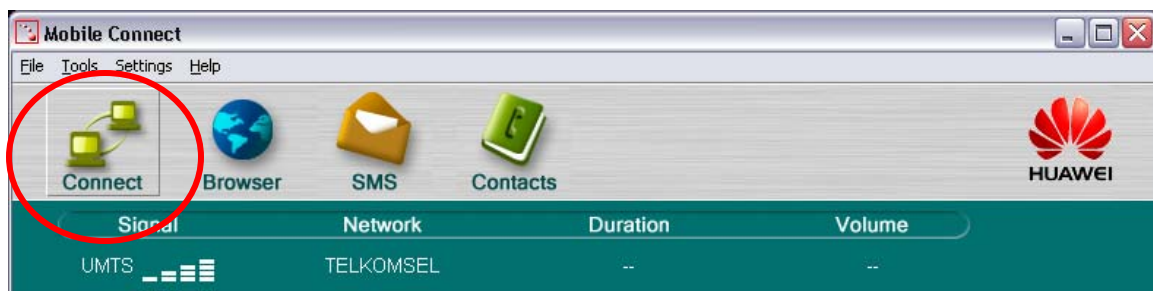


6. Please fill in the box according to the below picture and Click Save afterwards

The screenshot shows the 'Network Connection Settings' dialog box. The following fields and options are circled in red:

- Profile name: Tsel Broadband
- Authentication Number: *99#
- APN and Additional Settings: Static (selected), APN: flash
- Authentication Protocol: CHAP (selected)
- Save button

7. Click Connect



8. If you follow the step 1 to 5 correctly, you will be able to successfully connect to Telkomsel network with TELKOMSELEFlash settings. Successful connection will be marked with dialog box as shown below.

